

Ranching and Rangeland Management in Complex Settings

Mark Eisele
King Ranch Company of Cheyenne, WY
&
Wyoming Stock Grower's Association, President

The Reality of Grazing Operators

- Importance of Producer
- Agency Relations
 - Cooperative Planning and management of both livestock and wildlife on grazing operations
 - Wyoming land: about 50% owned/regulated by the government
 - Reasonable Common interests of both parties
- WOMEN – growing % in the state of landowners
 - sometimes overlooked in process



Producer Knowledge Barrier



- Public Knowledge Barrier
- Beef By Products
- Ag-in-the-Classroom

New and Experienced Producers

- Diverse generations should work together along with conservation agencies and organizations.
- Serve as guides for new or potential producers and Vice Versa
- Technical v. Long Term Perspective
- Both equally important

Pressures on Livestock and Wildlife



- Subdivisions
 - Cost to Counties and actual loss of habitat
- Population Density and Public Needs
 - Affecting the future of livestock producers and wildlife
 - All stakeholders need to be involved in a collaborative process for realistic, achievable results



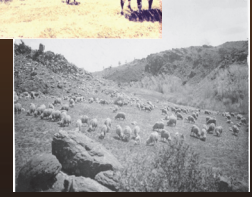
Alternative Energy

- Wind Energy
- Solar Energy



USFS - Pole Mountain Grazing

- Before
 - Large numbers of stock on areas
 - Over utilization
 - Species Listing
 - Multiple-Use Deficiency
 - Minimal Communication between producers, agencies and other beneficiaries



USFS Grass/ Rangeland Conditions



- Now
 - Better Utilization
 - Decreased Stock Numbers
 - Species preserved and listing limited
 - Multiple-Use Incorporated
 - Improvement of Communication and collaborative process
 - Conditions overall have been recovered to a healthier, enhanced setting

Grass Monitoring/ Cage Site

- Managing Land so Species are Not Listed
 - Why we should do this now rather than later?
 - So that there is no need for lists in the future
 - Wildlife and Livestock people become allies to decrease chance of species becoming listed
 - Potential burden to producers if avoided
 - Water Quality in Riparian areas



Stock Tank Water Development

•Developing off-site water

- Both a livestock and wildlife benefit
- Helps maintain riparian areas or fragile grasslands
- Just one of many improvements for wildlife and livestock management
- Consideration of wildlife friendly facilities



Cattle on Grasslands



- Ranchers are not only livestock managers but also habitat managers.
 - Both private and public sectors benefit through better management and maintenance practices
 - Public land grazing benefits wildlife habitat on private lands

Hay Field/ Winter Range

- Providing habitat and range area in all seasons -- an advantage for wildlife and livestock.
 - Value – Added Bundle of Products



Partners in Conservation



•Heterogeneity

- Enjoyment of wildlife population, Relief on open spaces and economic goods
- Avoid "Big Hammer" Approach
- Contributions to the different community sectors: Federal, Private, State, Public

Crossroads: Beginning or End



- Ranchers, Livestock Producers and Conservationists have more common ground than differences.
 - Well-being of nature of great concern
 - Provide products to the public through common interest for the community
 - Educate, Outreach and Inform the people who we are and what we do!

*Beginning of coordinated resource management and continued cooperation
OR...
End of diverse management of habitats that many before have successfully
implemented?*